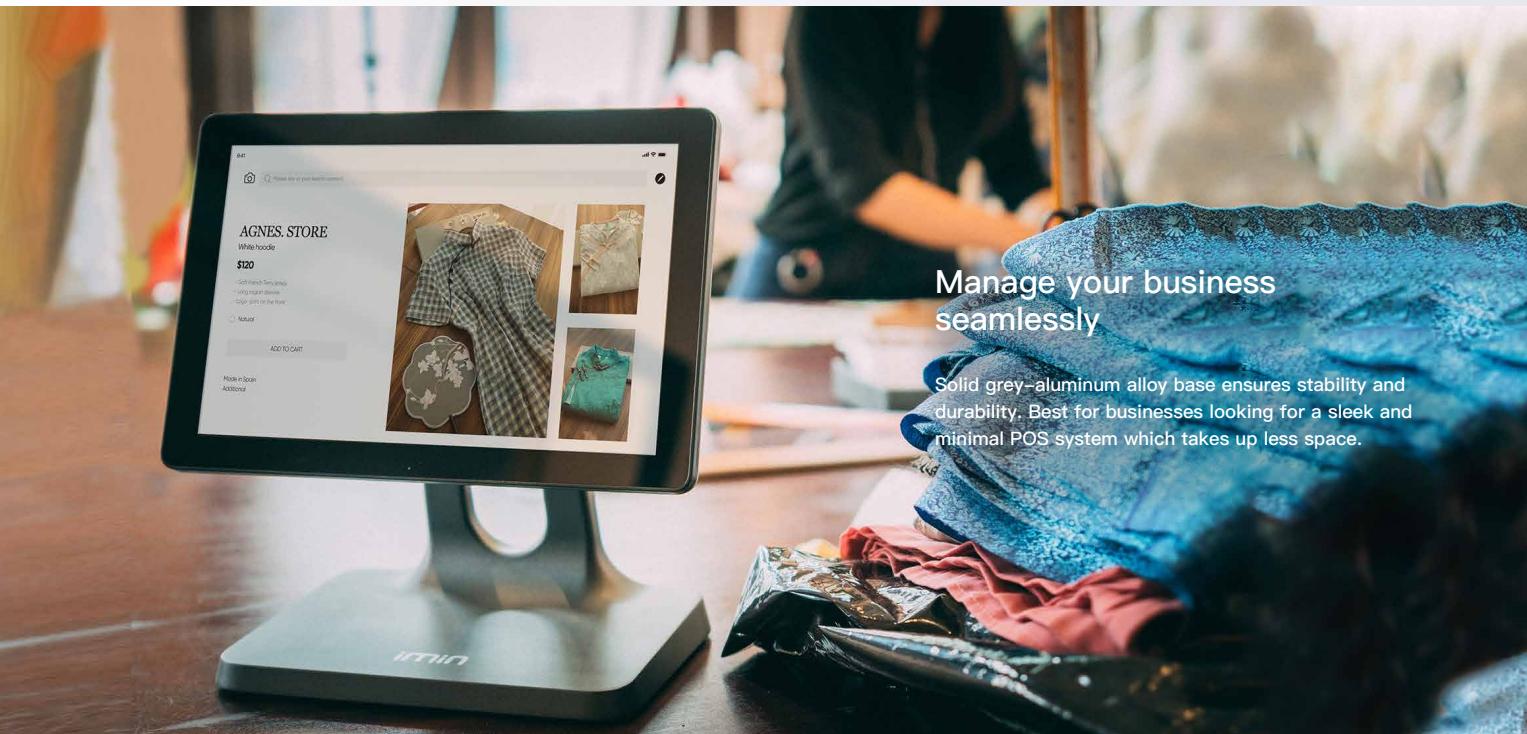
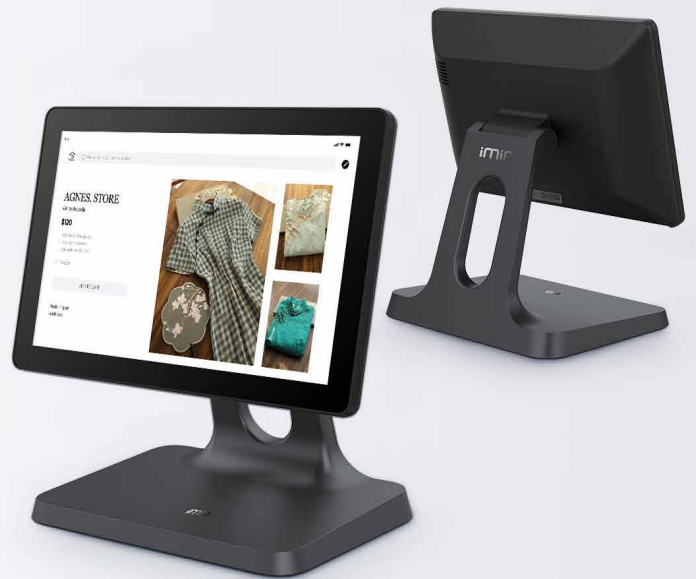




iMin D2 Desktop POS

The iMin D2-402 sits snugly on your countertop, yet punches above its weight to perform all the functions of a larger device.



Manage your business
seamlessly

Solid grey-aluminum alloy base ensures stability and durability. Best for businesses looking for a sleek and minimal POS system which takes up less space.

Secure your next sale with iMin D2.

A business powerhouse that saves your countertop space.



Display

Compact enough to fit onto your countertop



Rotary

Multi-angle rotary hinge allows you to tilt the screen up to 105 degrees vertically

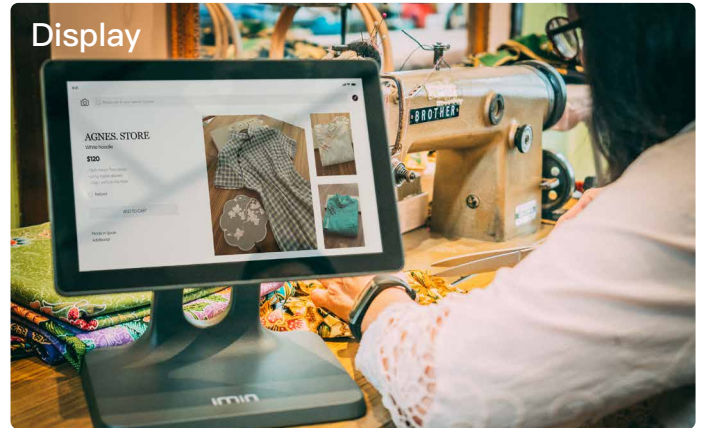


Stand

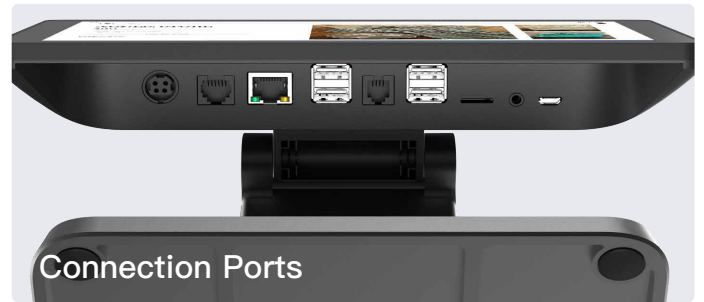
Thoughtfully crafted stand features a hole to thread your cables through, for a clean and minimal countertop



Stand



Display



Connection Ports

Specification

Display	Display: 10.1" 1280 x 800	Memory	RAM: 2GB / 4GB ROM: 8GB / 16GB / 32GB
Processor	Quad-Core, Cortex – A55, up to 1.8GHz	Touch Panel	Multi-point Capacitive Touch Panel
Operating System	Android 11 iMin UI	Power	Input: 100–240V; Output: 24V 1.5A
Connectivity	Wi-Fi: 802.11 b/g/n (2.4GHz) Bluetooth 4.2	Speaker	1.5W Mono
Peripheral Ports	USB Type-A x 4, Micro USB x 1, RJ11 x 1, RJ12 x 1, RJ45 x 1, 3.5mm Audio Jack x 1, TF Card x 1, DC Jack x 1	Button	Power key, Reset key
TF Card	Up to 128G	Certification	FCC CE IMDA
Dimensions	252 x 154 x 250mm	Weight	1.85Kg

*The product pictures and display contents in the above pages are for illustration purposes only. The actual product effects (including but not limited to appearance, color, size) and screen display contents (including but not limited to background UI pictures) might differ.

*The performance results are obtained from iMin's internal laboratory and extracted from specific test environments. In actual use, there might be a difference in performance due to individual differences in product, software, use conditions and environmental factors.